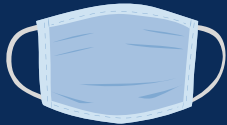




Covid Safety for Field Trips

Updated 3/9/22

Masks



In accordance with the recommendation of Public Health Madison & Dane County (we are located in Dane County), masks are currently not required, **but you are more than welcome to wear them.** According to Public Health Madison & Dane County, "Masks can provide another layer of protection."

Self-Paced Tours



Tours are now self-paced, with multiple educators stationed in the cave, instead of the traditional guided experience.



New interpretive signage includes both science and history to enhance your experience.



We recommend breaking into smaller chaperone groups and encouraging chaperones to assist the students in actively learning (reading the signs, looking at the maps, and talking to staff). Visit our [Educational Resources](#) page for pre-visit materials.



Most groups have spent about 45 minutes in the cave, but in some cases it has been as little as 30 minutes or more than an hour. You do not have a set time limit, so the pace is set by you!

Group Sizes and Times

To best protect your students, we are booking 1-2 groups at most on site at any one time, depending on group size and activities. Typically we have one morning and one afternoon slot available per day. Days and times will be limited, and public guests will be on site.